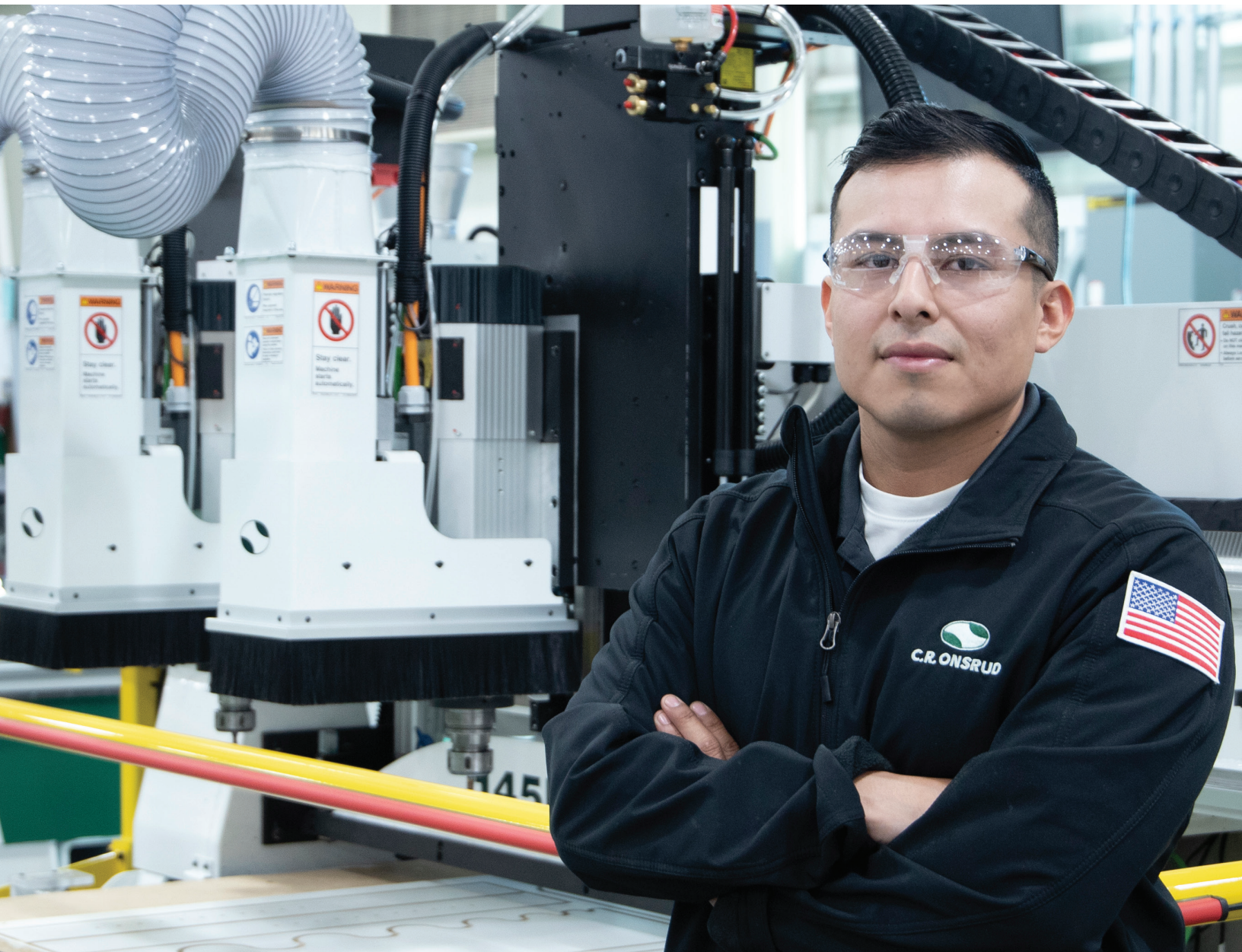


~~WOOD~~
WOULD YOU?



YOU ARE THE WOOD INDUSTRY

The wood industry is bigger than you think,
and so are the opportunities.



~~WOOD~~
WOULD YOU?

~~YOU~~
**WE ARE THE
WOOD INDUSTRY**

It's where you can find your passion.

CNC machinery operation, marketing, safety operations... The wood industry is bigger than you think, and so are the opportunities.

YOUWOOD.COM/GO

WOOD ~~WOULD~~ YOU?

YOUWOOD.COM

FIND YOUR PASSION IN THE WOOD INDUSTRY

Connecting people to career opportunities.

What is YouWood.com?

YouWood.com is a website designed to attract qualified job candidates to the wood industry with:

- Access to continually updated **job posting boards**
- **Career development** resources
- Compelling industry **blogs and videos**

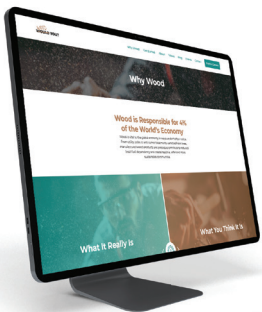


Who Visits YouWood.com?

- **High school and post secondary students** exploring career pathways
- **Veterans** seeking civilian jobs that value their skills
- **Adults** looking for growth opportunities or shifts into wood careers

How Can YOU Get Involved with YouWood?

- Share the YouWood.com website with STUDENTS so that they can learn more about careers in wood and how to engage with the industry.
- Share the YouWood.com website with CTE colleagues and administrators.
- What would you and your students like to see on the website? We want it to be a valuable resource for you. Please share recommendations or suggestions!



Visit [YouWood.com/work](https://youwood.com/work) to explore the site and learn more.
You can also email us at contact@youwood.com with any questions or contributions.



EDUCATOR RESOURCES

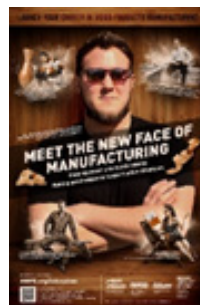
awfs.org/education/resources-for-teachers/



For documents and resources on industry and career information and school wood facility info for educators on power and dust collection.

WOODINDUSTRYED.ORG

A searchable database of woodworking and related subject schools and training programs. Over 1,000 schools listed throughout North America. Search by geographical filters, type of program, certification, etc. Also includes listings of trade associations and media, industry events, career resources, and other information for students, educators, job seekers, & industry partners.



MEET THE NEW FACE OF MANUFACTURING

Click on the QR code above to watch videos of young professionals in woodworking career paths. Contact AWFS/Adria Salvatore to request FREE posters.

adria@awfs.org or (323) 215-0311

AWFS® FAIR - JULY 25-28, 2023

AWFSFair.org



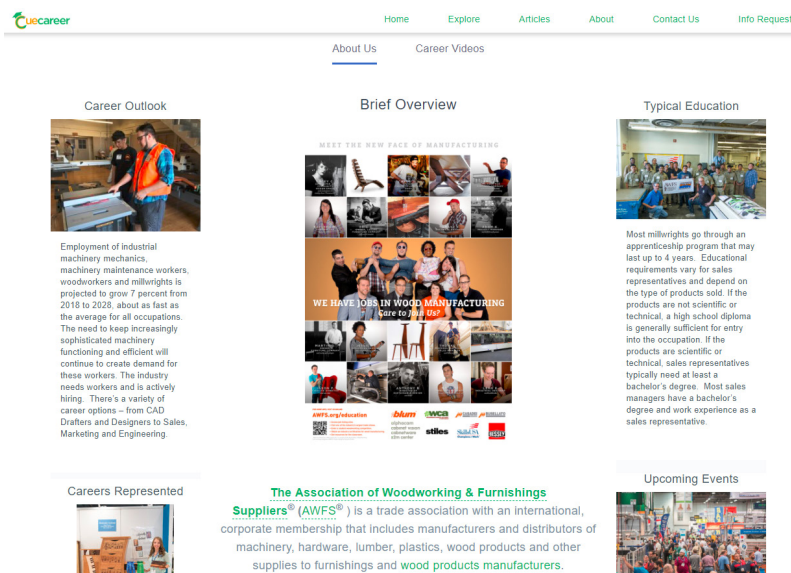
The AWFS® Fair takes place every other year at the Las Vegas Convention Center (NV). Over 10,000 wood industry professionals attend, as well as educators and students in wood-related school programs. Special activities are arranged for students and teachers, including:

- A networking session with industry professionals
 - The Teacher Track of educational classroom seminars
 - A student woodworking competition (Fresh Wood)
- ...and more.

Registration is FREE for students and teachers.

CUECAREER.COM

Learn about industries and **watch video interviews** with people in under-represented career paths and industries!



Questions? Contact:

AWFS® Education

(323) 838-9440

Adam Kessler

adam@awfs.org

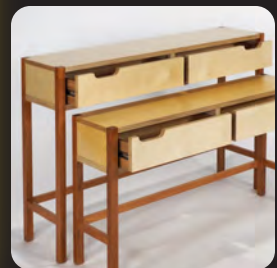
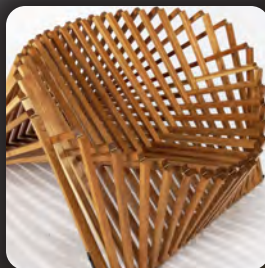
Adria Salvatore

adria@awfs.org



freshwood

2023



FREE TO ENTER

The 2023 AWFS® Fresh Wood competition is open to High School and Post-Secondary woodworking students in North America. Visit www.awfsfair.org/fresh-wood for compete rules and entry information.

CATEGORIES

- Seating
- Design for Production
- Open
- Tables
- 2023 Special Theme (TBA)
- Case Goods

TRIP TO AWFS® FAIR IN LAS VEGAS

Finalists and their instructors are invited to the 2023 AWFS® Fair in Las Vegas, NV. Travel allowance, one hotel night, and show entry included. Additional details and information is available on our website.

CONTEST PRIZES

Best of Show: \$1,000
People's Choice: \$750

Category 1st Place: \$1,000
Category 2nd Place: \$500
Honorable Mention: \$250



Nominate an outstanding woodwork student

The AWI Education Foundation Scholarship Program

The Architectural Woodwork Institute (AWI) supports the advancement of woodworking through the next generation with the AWI Education Foundation Scholarship Program.

As a woodwork program instructor or school administrator, we're inviting you to nominate your two finest woodworking students for a scholarship of **\$500 – \$4,000**. These funds can offset the costs of admissions, supplies, and books to help your nominees reach their full potential as innovative leaders in the woodworking industry.

Nomination schedule & deadlines

Open nomination and application period | **November 1 – January 31**

Application evaluation | **February 1 – March 31**

Recipient notification & distribution of scholarship funds | **April**

Please be aware that only two nominees per instructor will be accepted.



Visit www.awinet.org/about/education to learn more and apply!



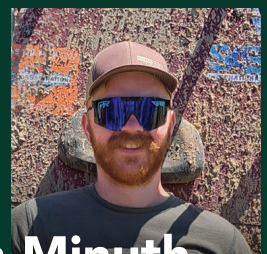
Two of last year's **25** talented recipients



Connor Jennings

PITTSBURG STATE UNIVERSITY

Majoring in Architectural Manufacturing Management and Technology & a Minor in Business Administration



Nathan Minuth

PITTSBURG STATE UNIVERSITY

Majoring in Architectural Manufacturing Management and Design

Fund your woodworking program

The AWI Education Foundation Academic Grant Program

The AWI Education Foundation is committed to giving **\$1m** in funding over the next decade to sustain, grow, and better educate tomorrow's woodworkers.

Last year, we awarded over **\$108,000** through our Academic Grant Program. Now, it's your chance to apply for funding to support your woodworking students.

Who can qualify for a grant?

Any not-for-profit secondary or post-secondary school that displays critical development in technology and skills used in producing architectural woodwork is encouraged to apply.

Application schedule & deadlines

Open grant application period | **October 1 – March 31**

Application evaluation | **April**

Notification of grant recipient | **June**

Distribution of grant funds | **July**



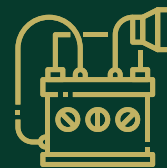
Visit www.awinet.org/about/education to learn more and apply!



Use your grant funds to pay for...



Technology



Equipment



Facility Improvements

NWFA Wood Flooring Specialist Apprenticeship Program

Benefits for Workers

nwfa



HOPING TO LEARN A MARKETABLE SKILL?

Contact us to find an employer near you that is participating in the National Wood Flooring Association (NWFA) Apprenticeship Program, approved by the U.S. Department of Labor. This program is an industry-driven, targeted career path providing you with an opportunity to gain experience, earn while you learn, and receive a nationally recognized credential upon program completion.

HOW CAN NWFA'S APPRENTICESHIP PROGRAM BENEFIT YOU?

TWO-THIRDS of flooring companies surveyed are experiencing a shortage of skilled labor.



FLOOR COVERING
LEADERSHIP COUNCIL

*- Floor Covering
Leadership
Council study*

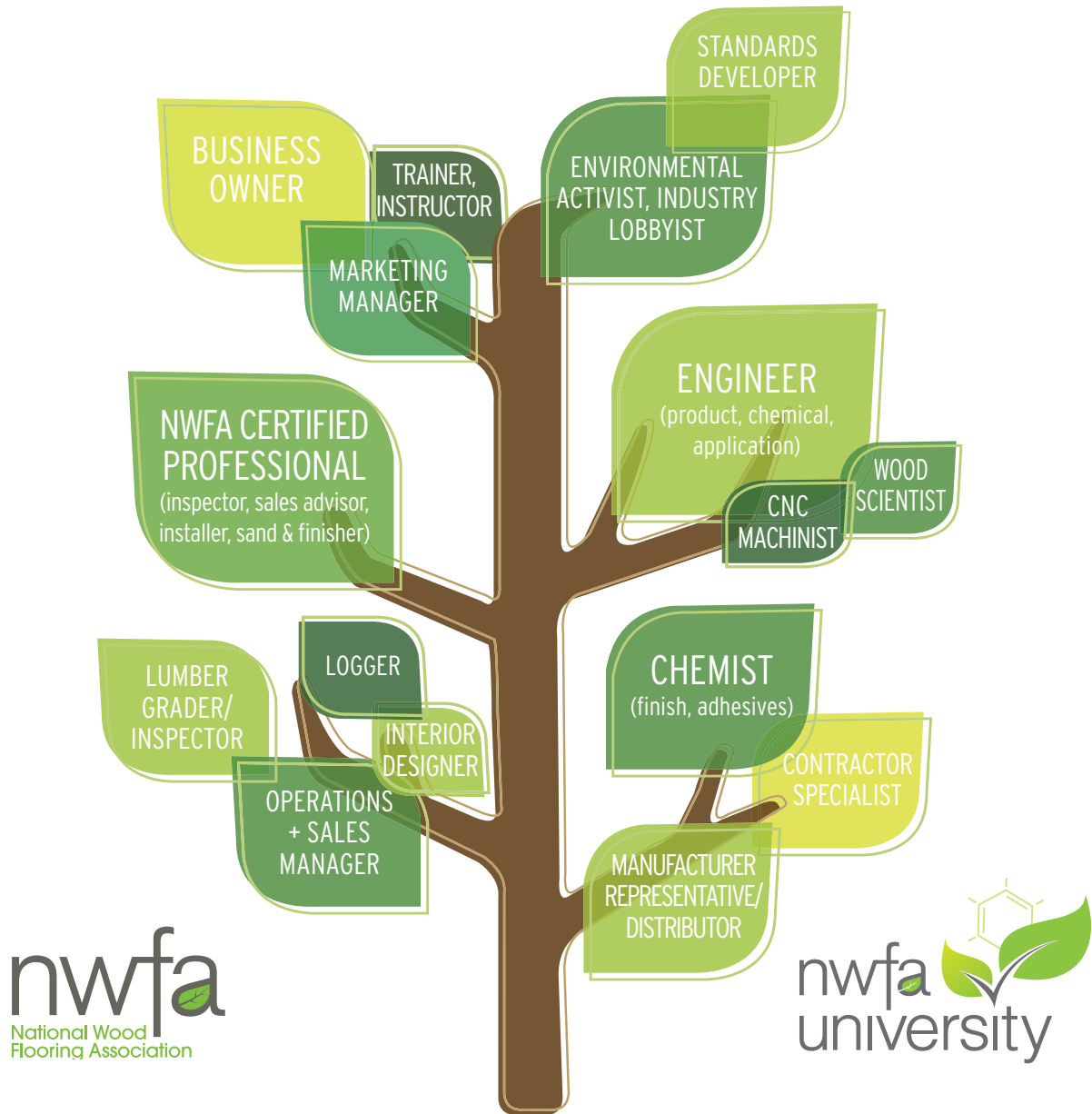
EMPLOYEES

- Receive on-the-job training with related classroom instruction that will increase your skill level and wage
- Earn a nationally recognized credential
- Connect with a mentor that will instruct and guide you through the program
- Qualify for guaranteed career advancement
- Apply to receive funding
- Earn college credit (*varies depending on state*)

Find a participating employer near you to start a job in the wood flooring industry that has a competitive wage from day one. Grow your knowledge while working in a long-term position that will support you with structured learning and one-on-one mentorship.

Register for the program at nwfa.org/apprenticeship.

NWFA University has wood flooring education covered FROM THE GROUND UP



WHY BUILD A CAREER IN WOOD FLOORING:

- The industry needs workers and is actively hiring.
- Students can start an apprenticeship right after graduation.
- There's a variety of career options - From logger, to installer, to even sales.
- Wood flooring is a sustainable product and career.



Wood Manufacturing Technology

The Wood Manufacturing Technology program at Fox Valley Technical College provides the learner with the skills and competencies needed to become a professional woodworker. The program utilizes the latest technologies while also building upon the basic skill set necessary to be successful.

The program is one full calendar year long with entry points in the spring and fall.

Reasonable tuition and an excellent placement rate.

www.fvtc.edu/wood

For more information contact:

Student Recruitment Specialist, Catey Frost 920-232-6112 Frost@fvtc.edu

Instructor, Glenn Koerner 920-232-6009 Koerner@fvtc.edu

Instructor, Mark Lorge 920-232-6011 Lorge@fvtc.edu



Cabinetmaking & Millwork Program



"The program gave me the confidence and skills to begin a fulfilling career in the Wood Industry" -former Graduate

The Cabinetmaking & Millwork Program offers a one-year technical diploma. The program is designed to introduce students to multiple facets of Wood Manufacturing. A strong emphasis is placed on drawing, beginning with sketching, then advancing to hand drafting and finally Computer Aided Design (CAD). Students learn to work from prints and specifications, in accordance with the Architectural Woodwork Standards.

In our world class lab, students learn the fundamentals of working with wood, from planning projects to finishing details. From traditional woodworking equipment and hand tools to the latest computer numerically controlled (CNC) machinery and soft-ware, students learn to plan and process wood in the most efficient manner.

Through partnerships with area businesses and local and state agencies, students can gain practical experience through job shadowing and internships. Career opportunities include positions as cabinetmakers, machine operators, finishers, project managers, engineering and design, and finish carpenters.

The Cabinetmaking & Millwork Program is geared towards individuals seeking employment in the Wood Industry. Our graduates have gone on to become Cabinetmakers, Finish Carpenters, Architectural Woodworkers, Finishers, Store Fixtures Manufacturers, CAD/CNC Operators, and many other careers related to Manufacturing & Construction.

Course Details

First Semester Courses:	Credits
<i>Woodworking 1A & B: Machinery & Methods</i>	5
<i>Woodworking 2: Materials and Processes</i>	5
<i>Wood Finishing A</i>	1
<i>Workplace Safety</i>	1
<i>Drawing 1 & 2 or AutoCAD 1 & 2</i>	2
<i>Laminates 1 & 2</i>	2

Total: 16

Second Semester Courses:	Credits
<i>Cabinetmaking, Millwork & Furniture 1</i>	5
<i>Cabinetmaking, Millwork & Furniture 2</i>	5
<i>Wood Finishing B</i>	1
<i>Drawing 1 & 2 or AutoCAD 1 & 2</i>	2
<i>Tool & Machine Maintenance</i>	1
<i>Surfaces 1& 2</i>	2

Total: 16

Tuition & Fees:

The current rate is \$141.00 per credit plus supplemental fees of \$11.44/credit. Students should budget approximately \$500 to pay for books, tools & supplies.



Pittsburg State University

COLLEGE OF TECHNOLOGY

**Bachelor of Science
In Technology**

Architectural Manufacturing, Management & Technology



The Architectural Manufacturing, Management & Technology program at Pittsburg State University provides graduates with an exceptional education in the wood product manufacturing industry, with a “learn by doing” mentality to education. Along with a 5-star culture and state-of-the-art tools and machinery, students receive first-rate support from the faculty and incomparable support from industry partners and constituents. PSU’s AMMT graduates receive a one-of-a-kind experience during their collegiate experience, preparing them to enter the workforce and make an immediate impact within the industry. Advantages in taking the program include: having both two and four year degrees, typical class sizes comprised of 15-20 students, graduation rate is nearly 100%, well paid summer internships (many include paid housing), flat-rate instate tuition in 37 states (12-21 credit hours cost the same!), students travel all over the U.S. to conferences & trade shows, and starting salaries are near \$55,000.00.

Students can find career opportunities after graduation in area supervision, assembly, CNC operation, CNC programming, engineering, GM/ownership, machine operation, drafting, estimating, sales and other areas.

The Society of Architectural Woodworkers (SAW) club provides students co-curricular experiences such as social events, networking, service, and leadership opportunities which look great on a resume.

Flat rate tuition in 37 states make Pittsburg State’s AMMT program very affordable to most of the continental U.S. Additionally, industry, program donors, and alumni scholarships help ease the cost for many of the AMMT students.

Any aptitude or personality can fit into the wood industry. Although having woodworking experience will help, students without experience have entered the program and have done very well after graduation. Whether your interest is in design, management, pre-production, sales or fabrication, the WPM program will give you the fundamental knowledge to have a long successful career in this industry.



JOIN THE CLUB!

PSU Society of Architectural Woodworkers (SAW)

Enrich your experience and get involved with our student organization to travel, engage with industry, work on community outreach, develop friendships and have fun!

Setting the Standard for Professional Woodworkers

WCA Mission Statement

To support workforce development for the woodworking industry, which includes certification and training of new and existing woodworking professionals as well as students at both the high school and post secondary levels.

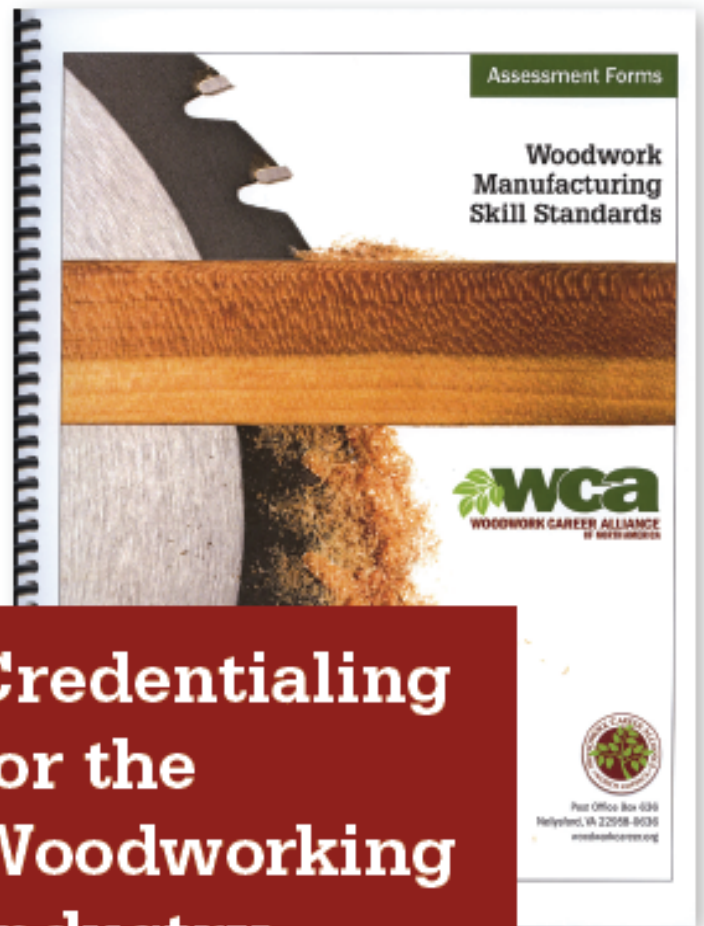
Skill Standards

The WCA Woodwork Manufacturing Skill Standards are a comprehensive, **industry recognized set of observable, measurable skills**. In partnership with other national and regional associations, educators, and others, the WCA developed and released the skill standards in 2011. The Standards encompass over 80 tools and 300 machine operations. The skill standards were, and continue to be, written by active woodwork professionals and educators inside the industry from all across North America.

Assessments

The WCA features an assessment process based on the skill standards which allows woodworkers to demonstrate their competency with woodworking operations with the results documented in a national database.

Credentials are earned as candidates are assessed by Evaluators against the skill standards. Candidates earn skill points for each successful assessment. Skill points plus experience hours in school or the workplace qualify a candidate for the various credential levels. Candidates must purchase an **Individual Membership** and Assessment Credits to participate in the assessment process.



Setting the Standard for Professional Woodworkers

**MANufacturing™
&
EDUcation™
Member Benefits**

Contact us info@woodworkcareer.org

Visit www.woodworkcareer.com



"It's in my blood to work with my hands. Being a floor guy is hard work but it's so rewarding. At the end of the day, you see the progress you've made and know you've earned a good, honest living doing it. Once you've learned a trade, no one can take that away from you. There will always be a need for a floor guy, no matter what advances are made with computers and technology."

*Stephen King, @sapwoodworking
Owner & Operator, SAP Hardwood*